
上海汽车集团股份有限公司

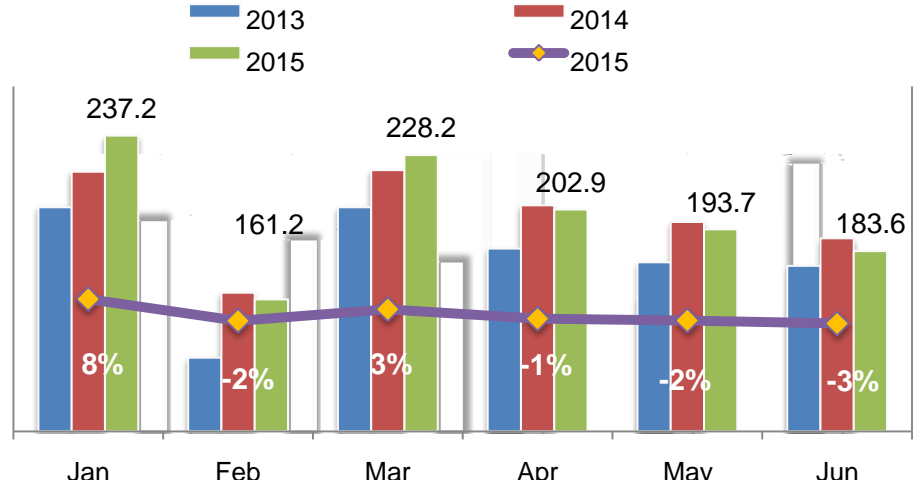
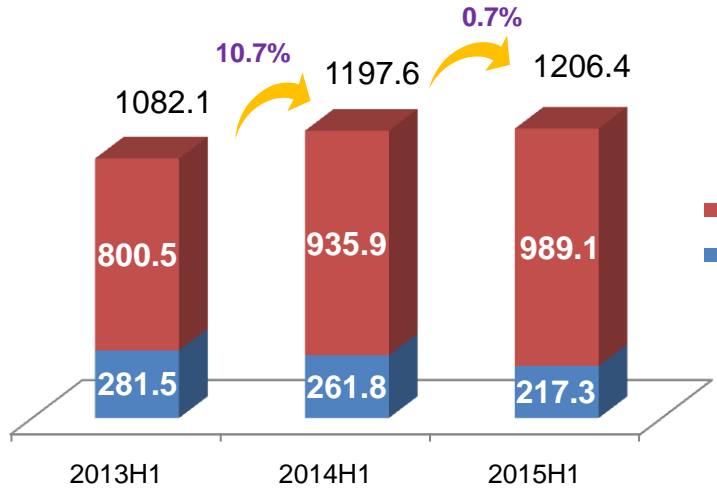
2015年中期业绩介绍会

2015 8 28

第一部分 上半年业绩回顾

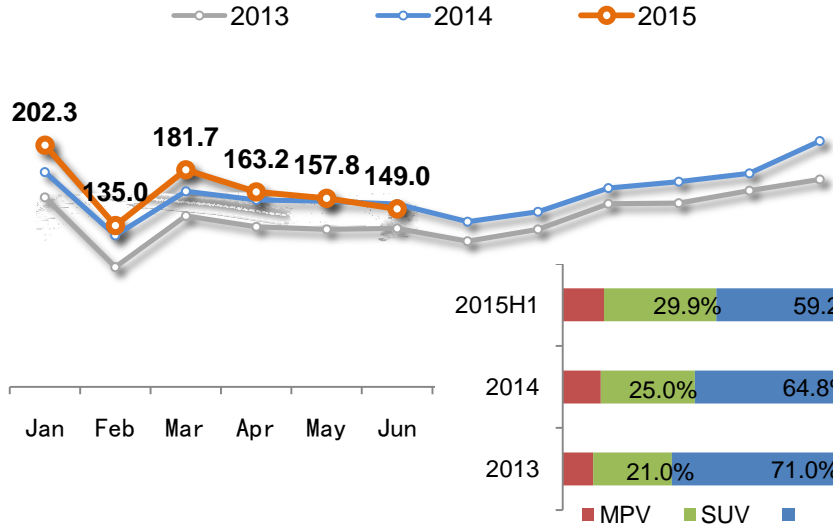


2015



2015

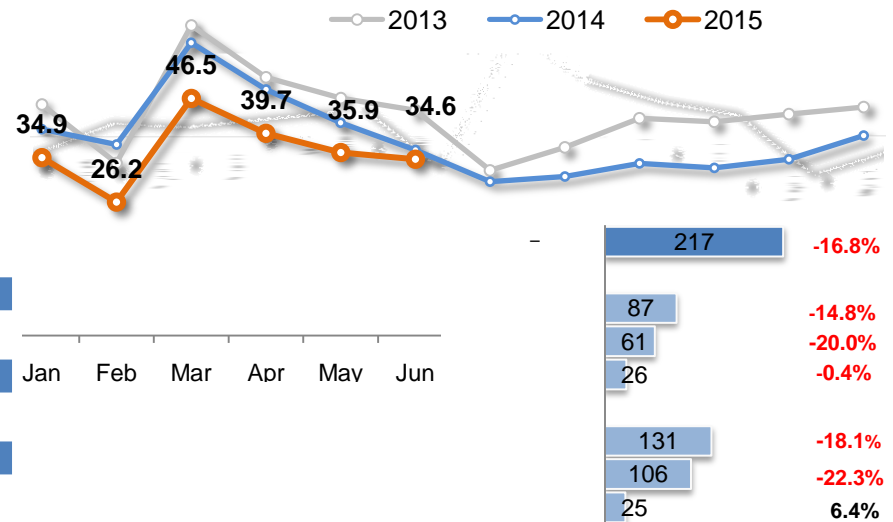
1-6



5.7%

SUV MPV

1-6



17%

		2015H1	2014H1	
	*	586,452	512,765	14.4%
		1,744,637	1,782,755	-2.1%
		2,331,089	2,295,520	1.5%
		473,835	480,900	-1.5%
		55,982	84,594	-33.8%
		529,817	565,494	-6.3%
		2,860,906	2,861,014	0.0%
		34,709	37,785	-8.1%

*

MG

G10

Blue header bar

	2014H1	2015H1	
*	102,340	68,198	-33.4 %
*	7,585	15,681	106.7%

* MG

MG
 3 1.45

A
 SUV



100%



550 Plug-in

1.57



2014H1	80.34	13.70	94.05
2015H1	80.50	13.78	94.28
	+0.3%	+0.6%	+0.3%

5 24

7



CHEVROLET



2014H1	35.81	45.04	3.38	84.23
2015H1	31.69	44.72	3.77	80.18
	-11.5%	-0.7%	+11.6%	-4.8%

1.5T

11.6

80.1

4.3%

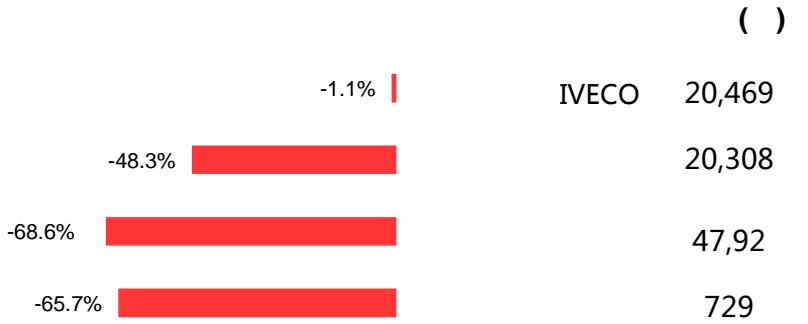
1 28



1.5T



2014H1	48.09	37.16	3.84	89.10
2015H1	47.38	32.93	18.30	98.61
	-1.5%	-11.4%	+376.6%	+10.7%



S 33.8 MPV 730 46%
7



NetBlue

NetGreen

60

IGS

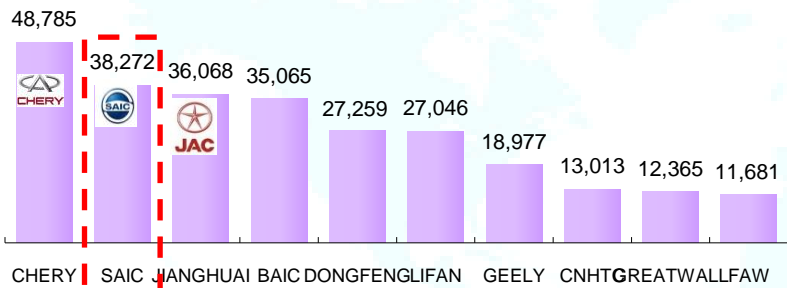


G10



1-6月上汽新能源产品：纯电动实现销售389辆、
插电式混合动力汽车3402辆。

2015 1-6



9.0%

MG

MG UK

1161

2015






车享电商平台建设

020

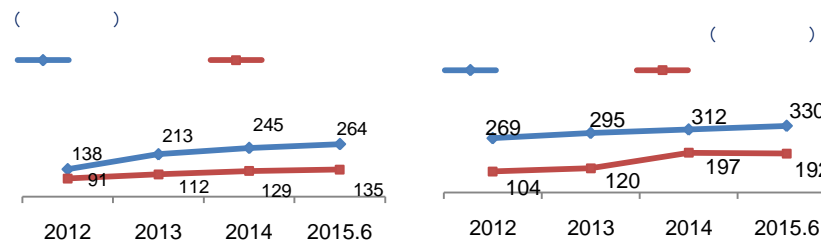
“ ” “ ”

“ ” “ ” “ ”

“ e ”

2015



10

200

3.03%

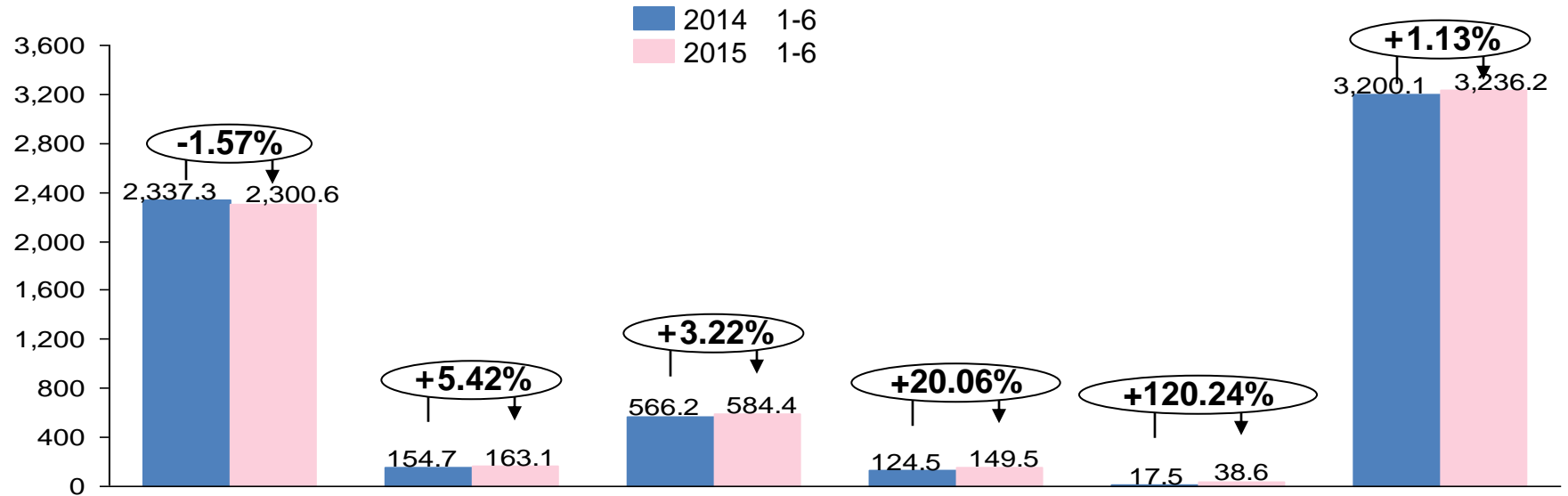




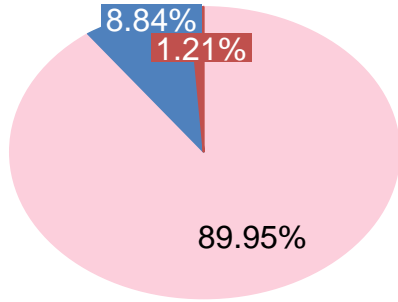
	2015 1-6	2014 1-6	
	286.21	286.10	0.04
	3236.15	3200.14	1.13
	199.05	192.64	3.32
	141.65	135.73	4.37
	1.285	1.231	4.39
	1.245	1.206	3.23
	1.066	0.492	116.50
	117.52	54.28	116.50
%	8.56	9.40	0.84

	4,742.62	4,148.71	14.32
	1,909.79	1,849.99	3.23
	1,590.63	1,576.64	0.89
	14.43	14.30	0.89
%	59.73%	55.41%	4.32



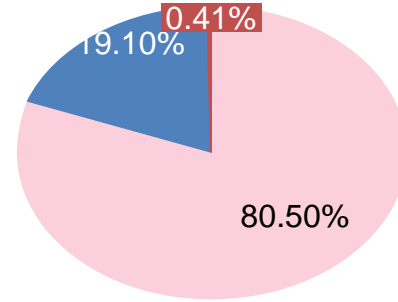


2015 1-6



(

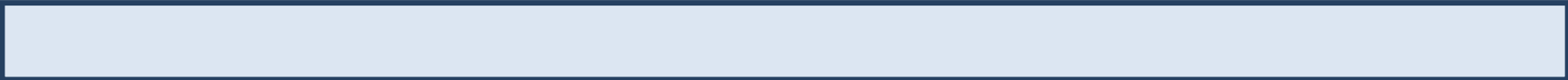
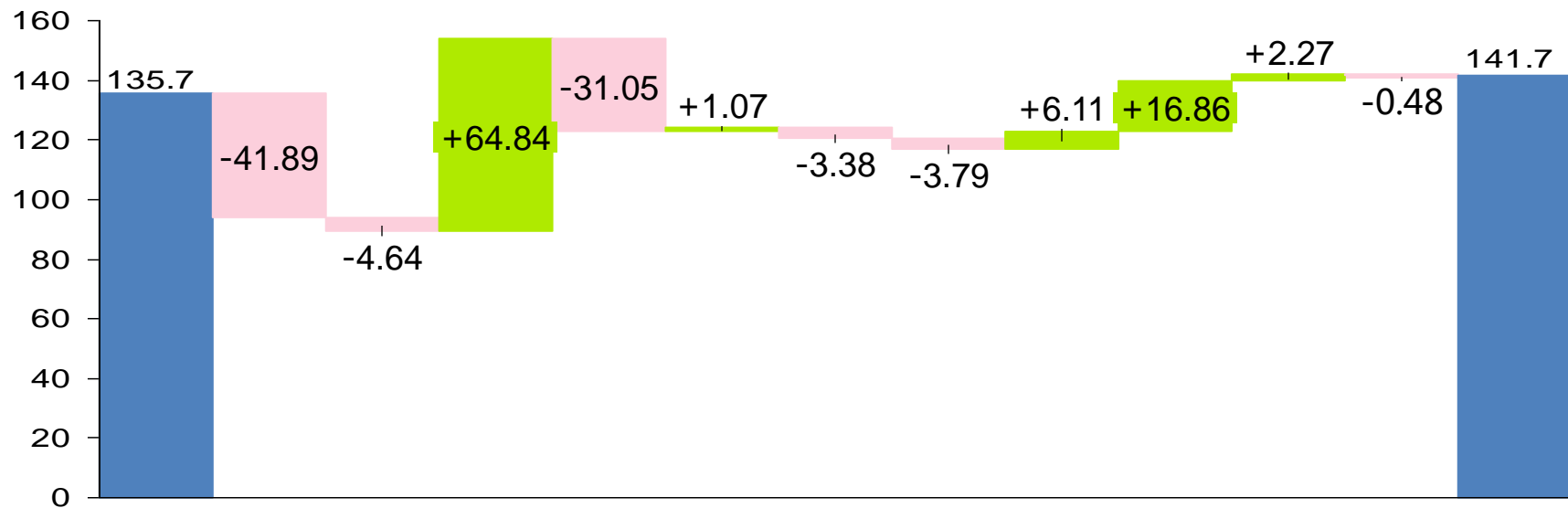
2015 1-6



	1,356,732
	133,303
	18,245
	1,508,280

	1,092,103
	259,069
	5,560
	1,356,732

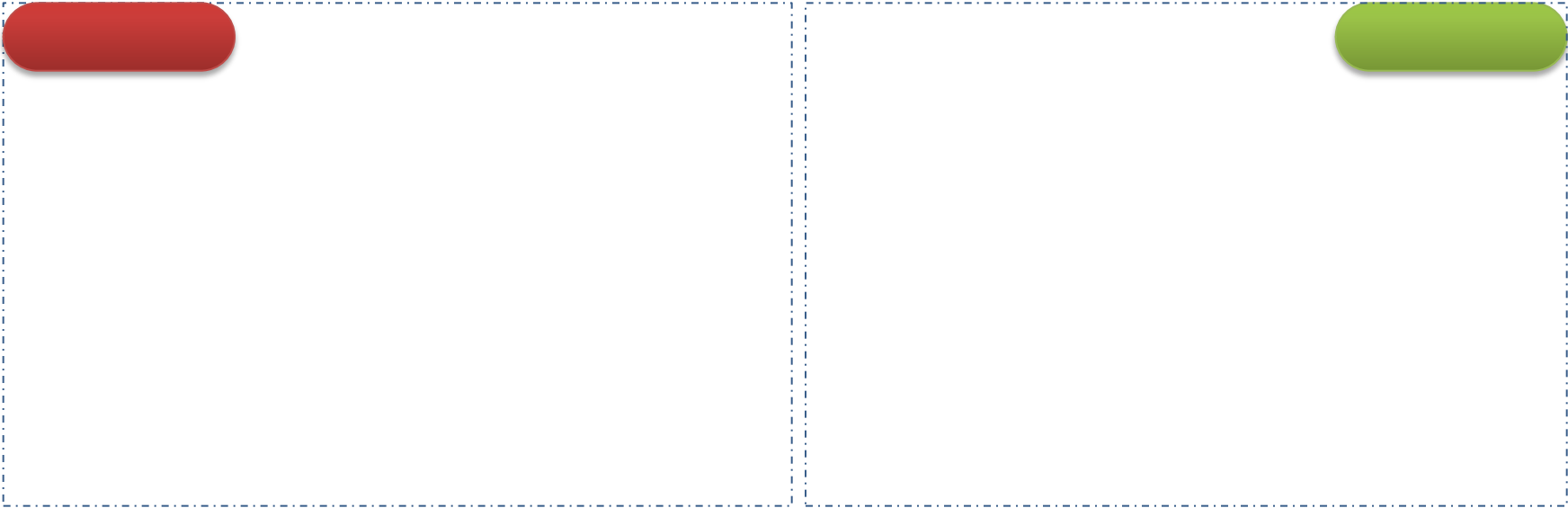
1. 2015 1-6
- 2.
- 3.



2015 1-6

第二部分 下半年经营展望

2015



	2,410		2,000
3%	410	11%	



上海汽车集团股份有限公司

2015年中期业绩介绍会

2015 8 28